

10/03/13

STATE OF NORTH CAROLINA  
DIVISION OF HIGHWAYS

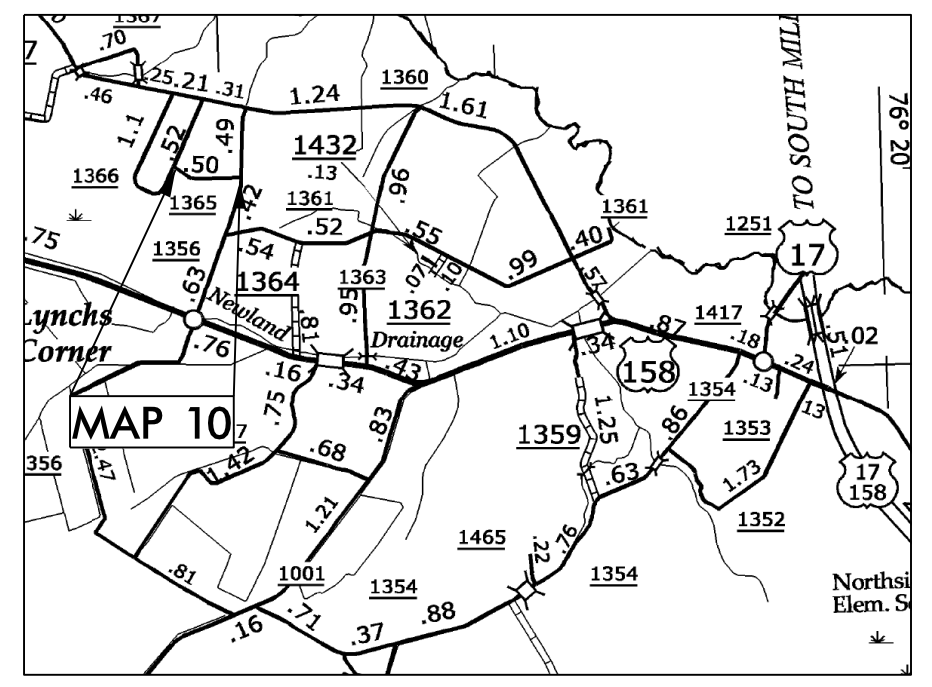
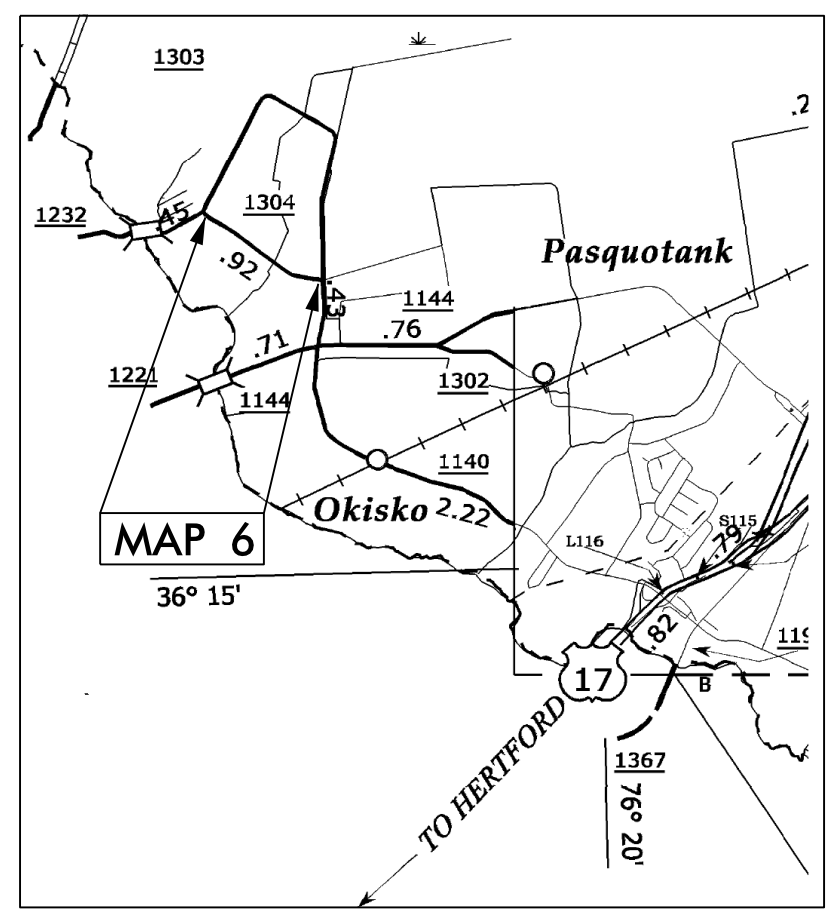
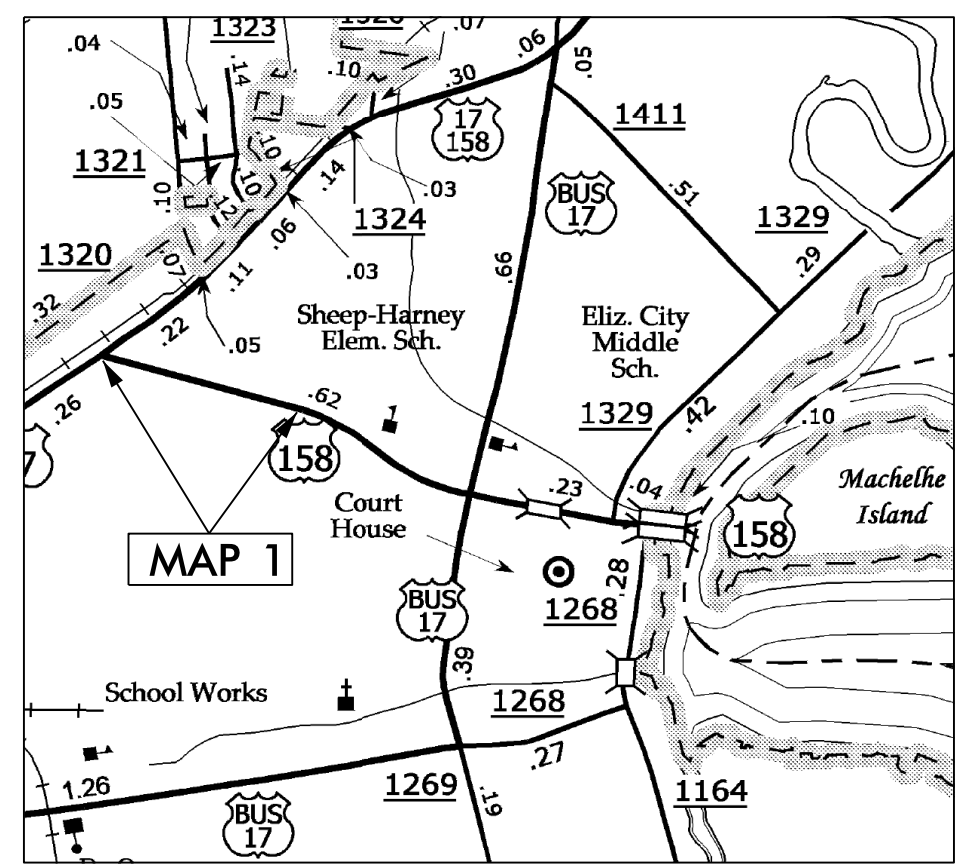
STATE	STATE PROJECT REFERENCE NO.	SHEET NO.
N.C.	1CR.10701.5, ETC.	1
STATE PROJ. NO.	F.A. PROJ. NO.	DESCRIPTION
1CR.10701.5		MAP 1
1CR.20701.100		MAP 6
1CR.20701.104		MAP 10

**PASQUOTANK COUNTY**

**LOCATION:**

MAP 1 US 158 BUSINESS FROM HARNEY ST. TO US 17 BUSINESS  
MAP 6 SR 1304 OWNLEY RD. FROM SR 1303 TO SR 1303  
MAP 10 SR 1365 TEMPLE RD. FROM SR 1366 TO SR 1356

**TYPE OF WORK: MILLING, WIDENING & RESURFACING**



**CONTRACT NO.: DA00203 WBS ELEMENT: 1CR.10701.5, ETC.**

**NTS**

**PROJECT LENGTH**

LENGTH OF ROADWAY PROJECT MAP 1 = 0.43 MI.  
 LENGTH OF ROADWAY PROJECT MAP 6 = 0.93 MI.  
 LENGTH OF ROADWAY PROJECT MAP 10 = 0.47 MI.

Prepared in the Office of:  
**DIVISION OF HIGHWAYS**  
 113 Airport Dr., Edenton NC, 27932

2012 STANDARD SPECIFICATIONS

LETTING DATE:

W.B. HOBBS, P.E.  
 DIVISION PROJECT MANAGER

C.E. SLACHTA  
 DIVISION PROPOSALS ENGINEER

**DIVISION OF HIGHWAYS  
 STATE OF NORTH CAROLINA**

DRAWN BY: EWB

10/03/13

**CONTRACT NO. : DA00203 WBS ELEMENT: 1CR.10701.5, ETC.**

STATE OF NORTH CAROLINA  
DIVISION OF HIGHWAYS

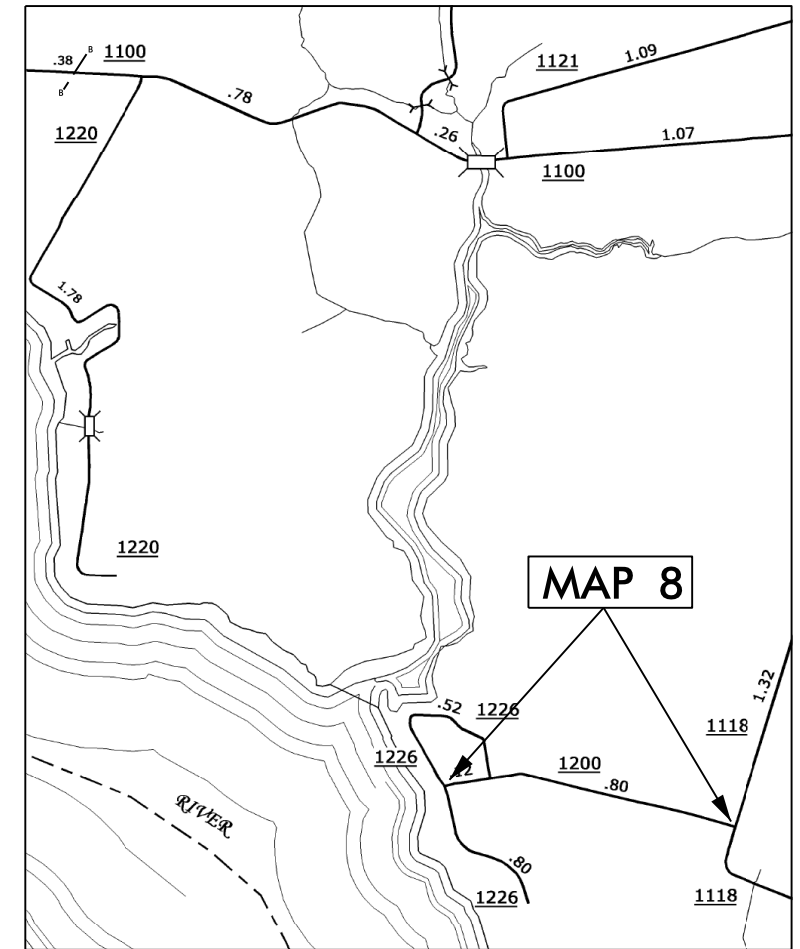
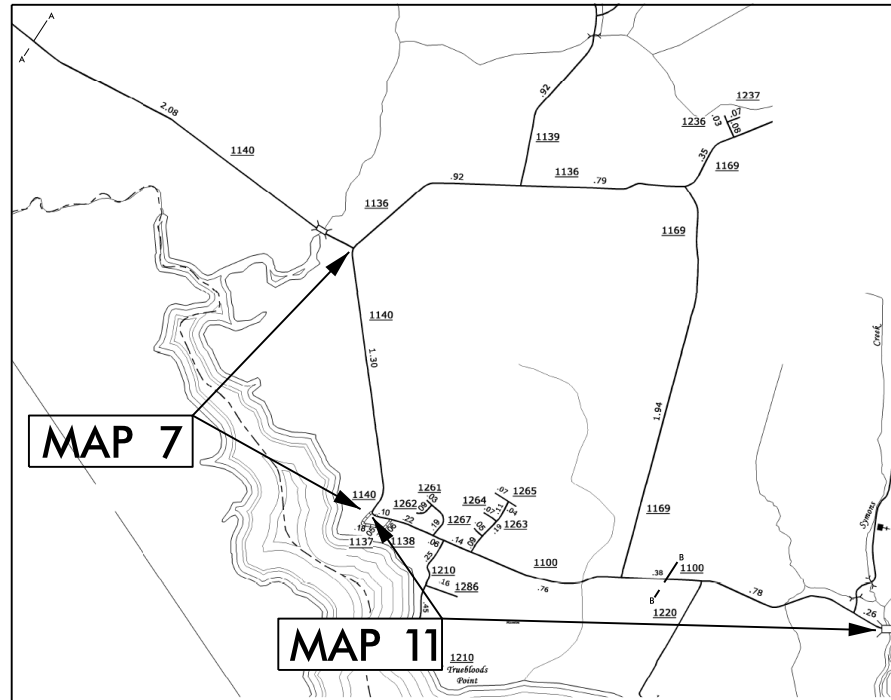
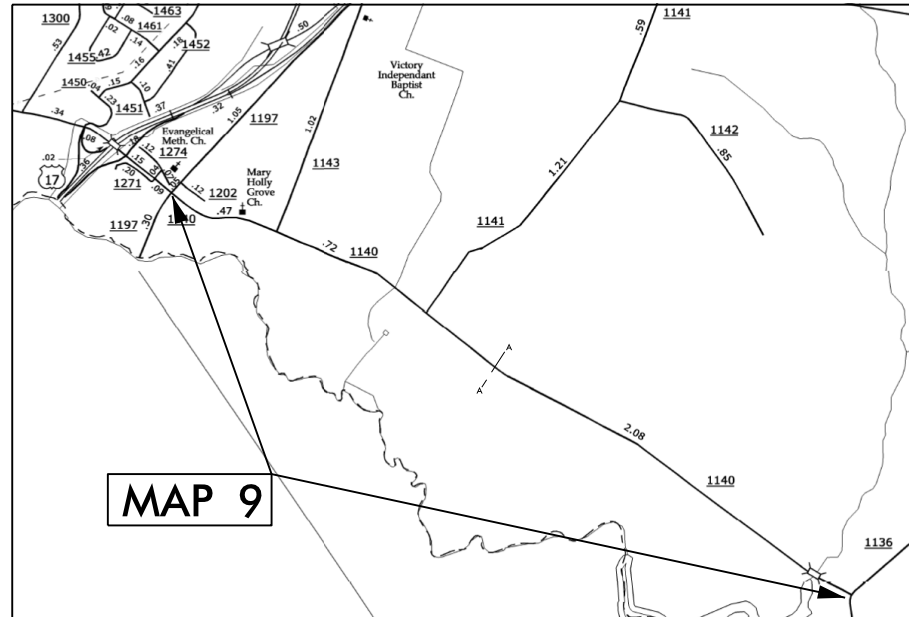
**PASQUOTANK COUNTY**

**LOCATION:**

MAP 7 SR 1140 NIXONTON RD. FROM SR 1136 TO SR 1100  
MAP 8 SR 1200 ALBEMARLE RD. FROM SR 1118 TO SR 1226  
MAP 9 SR 1140 HALLS CREEK FROM SR 1197 TO SR 1136  
MAP 11 SR 1100 NIXONTON RD. FROM SR 1140 TO SYMONDS CREEK BRIDGE

**TYPE OF WORK: MILLING, WIDENING & RESURFACING**

STATE	STATE PROJECT REFERENCE NO.	SHEET NO.	TOTAL SHEETS
N.C.	1CR.10701.5, ETC.	2	
STATE PROJ. NO.	F.A. PROJ. NO.	DESCRIPTION	
1CR.20701.101		MAP 7	
1CR.20701.102		MAP 8	
1CR.20701.103		MAP 9	
1CR.20701.105		MAP 11	



**NIXONTON**

**NTS**

**PROJECT LENGTH**

LENGTH OF ROADWAY PROJECT MAP 7 = 1.30 MI.  
LENGTH OF ROADWAY PROJECT MAP 8 = 0.79 MI.  
LENGTH OF ROADWAY PROJECT MAP 9 = 3.27 MI.  
LENGTH OF ROADWAY PROJECT MAP 11 = 2.62 MI.

Prepared in the Office of:  
**DIVISION OF HIGHWAYS**

113 Airport Dr., Edenton NC, 27932

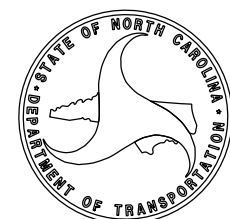
2012 STANDARD SPECIFICATIONS

LETTING DATE:

W.B. HOBBS, P.E.  
DIVISION PROJECT MANAGER

C.E. SLACHTA  
DIVISION PROPOSALS ENGINEER

**DIVISION OF HIGHWAYS  
STATE OF NORTH CAROLINA**



DRAWN BY: BMB

**CONTRACT NO.: DA00203 WBS ELEMENT: ICR.10701.5, ETC.**

STATE OF NORTH CAROLINA  
DIVISION OF HIGHWAYS

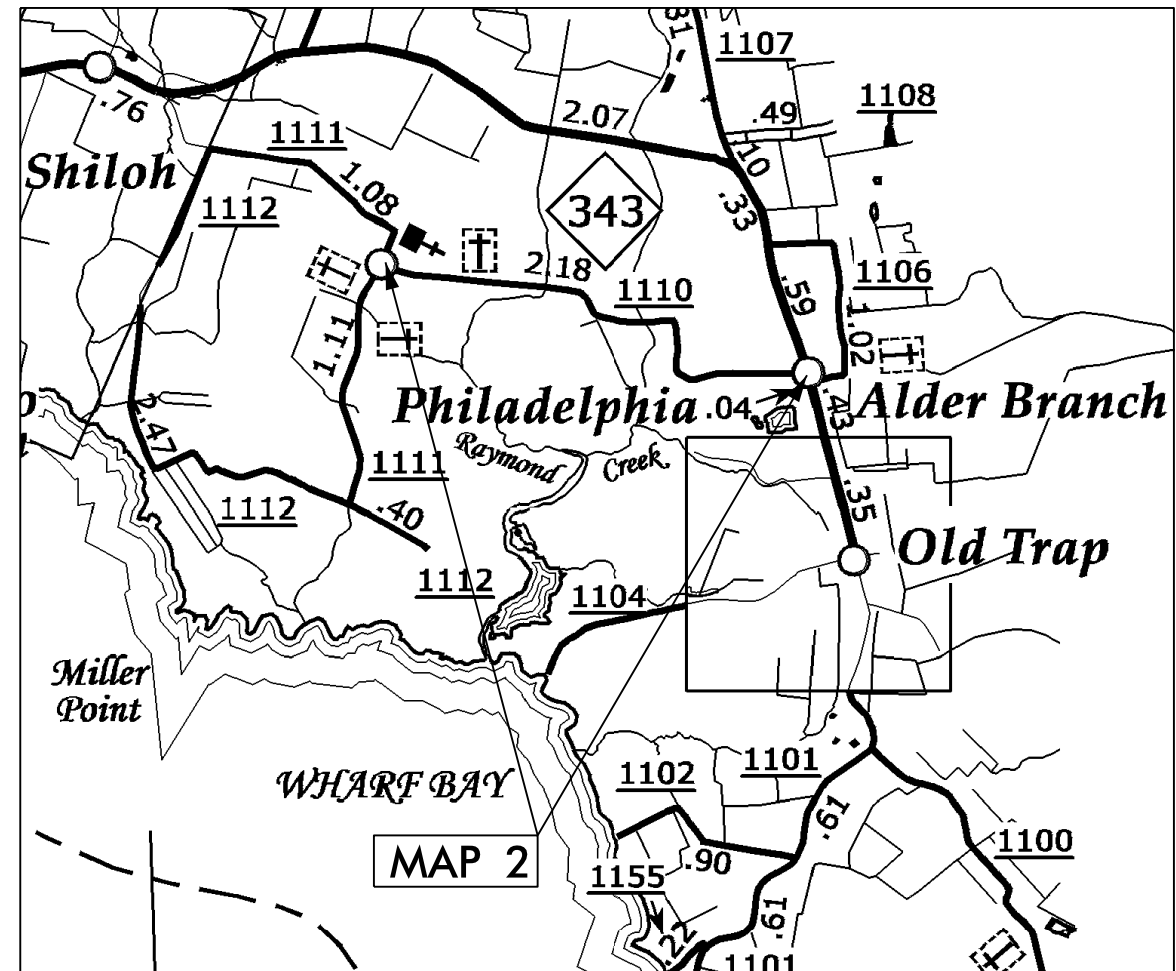
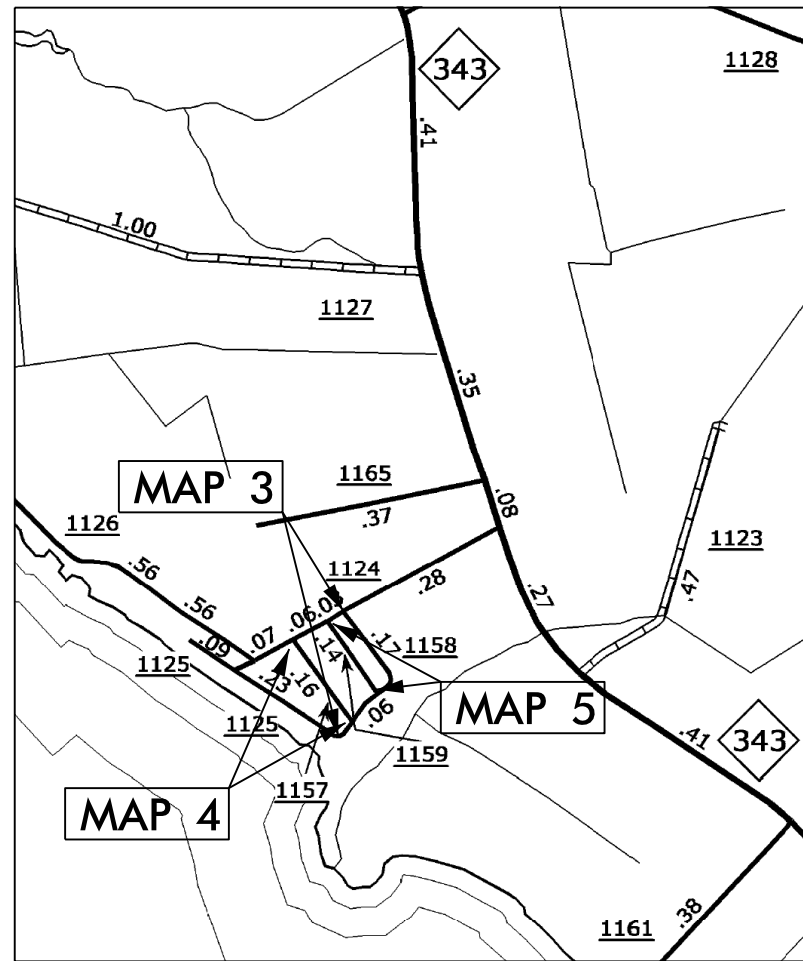
**CAMDEN COUNTY**

STATE	STATE PROJECT REFERENCE NO.	SHEET NO.
N.C.	ICR.10701.5, ETC.	3
STATE PROJ. NO.	F.A. PROJ. NO.	DESCRIPTION
ICR.20151.47		MAP 2
ICR.20151.48		MAP 3
ICR.20151.49		MAP 4
ICR.20151.50		MAP 5

**LOCATION:**

MAP 2 SR 1110 WICKHAM RD. FROM NC 343 TO SR 1111  
 MAP 3 SR 1158 GLEN DR. FROM SR 1125 TO SR 1124  
 MAP 4 SR 1157 DUKE ST. FROM SR 1124 TO SR 1158  
 MAP 5 SR 1159 EARL LN. FROM SR 1124 TO SR 1158

**TYPE OF WORK: MILLING, WIDENING & RESURFACING**



**NTS**

PROJECT LENGTH	
LENGTH OF ROADWAY PROJECT MAP 2	= 2.18 MI.
LENGTH OF ROADWAY PROJECT MAP 3	= 0.27 MI.
LENGTH OF ROADWAY PROJECT MAP 4	= 0.16 MI.
LENGTH OF ROADWAY PROJECT MAP 5	= 0.14 MI.

Prepared in the Office of:  
**DIVISION OF HIGHWAYS**  
 113 Airport Dr., Edenton NC, 27932

2012 STANDARD SPECIFICATIONS

LETTING DATE:

W.B. HOBBS, P.E.  
 DIVISION PROJECT MANAGER

C.E. SLACHTA  
 DIVISION PROPOSALS ENGINEER

DIVISION OF HIGHWAYS  
 STATE OF NORTH CAROLINA

# C O N T R A C T P A V E M E N T S C H E D U L E

C1	PROP. APPROX. 1" ASPHALT CONCRETE SURFACE COURSE, TYPE SF9.5A, AT AN AVERAGE RATE OF 110 LBS. PER SQ. YD.
C2	PROP. APPROX. 1½" ASPHALT CONCRETE SURFACE COURSE, TYPE SF9.5A, AT AN AVERAGE RATE OF 165 LBS. PER SQ. YD.
C3	PROP. APPROX. 1¼" ASPHALT CONCRETE SURFACE COURSE, TYPE S9.5B, AT AN AVERAGE RATE OF 140 LBS. PER SQ. YD.
C4	PROP. APPROX. 1½" ASPHALT CONCRETE SURFACE COURSE, TYPE S9.5B, AT AN AVERAGE RATE OF 168 LBS. PER SQ. YD.
E1	PROP. APPROX. 5½" ASPHALT CONCRETE BASE COURSE, TYPE B25.0B, AT AN AVERAGE RATE OF 627 LBS. PER SQ. YD.
V1	MILLING BITUMINOUS PAVEMENT. 1½" DEPTH.
U	EXISTING PAVEMENT.

PAVEMENT SCHEDULE

C2	PROP. APPROX. 1½" ASPHALT CONCRETE SURFACE COURSE, TYPE SF9.5A, AT AN AVERAGE RATE OF 165 LBS. PER SQ. YD.
U	EXISTING PAVEMENT.

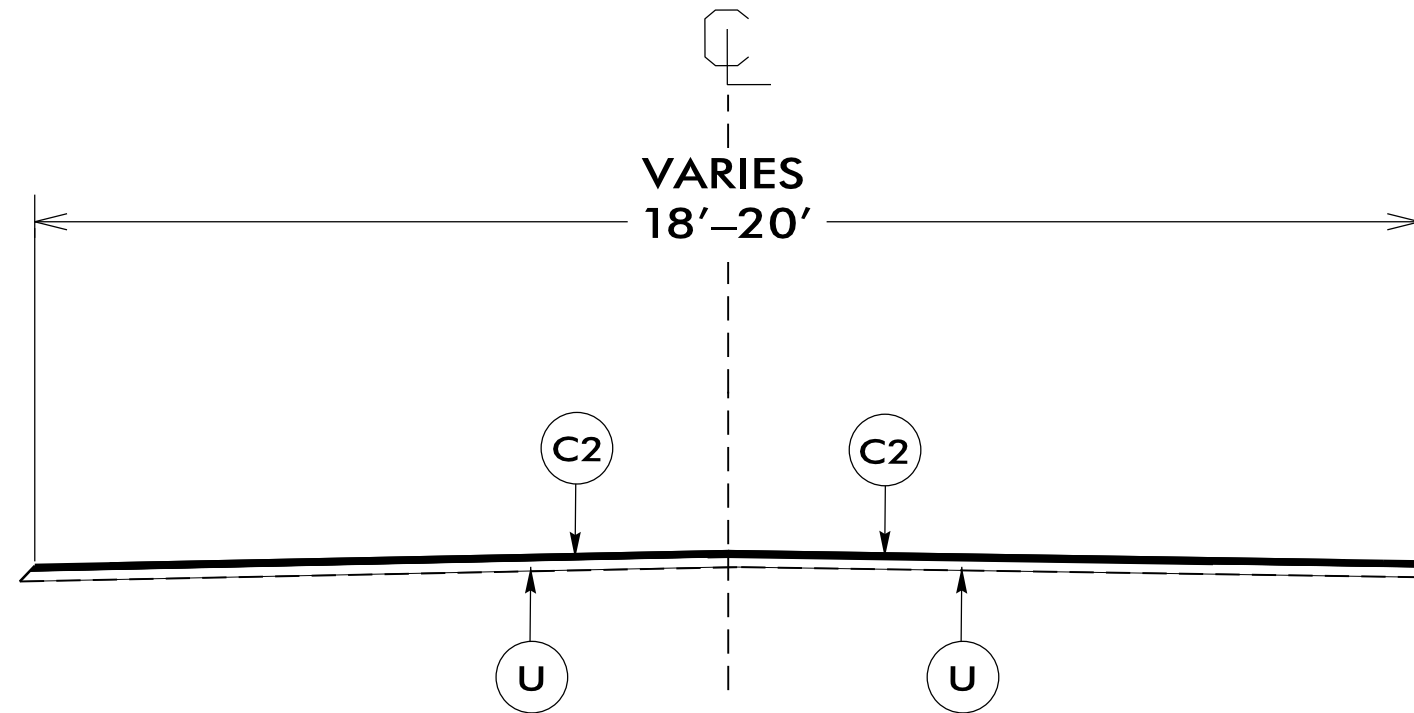
PROJECT REFERENCE NO.	SHEET NO.
1CR.10701.5, ETC.	5

NOTES:

\*ALL PAVED S.R. ROADS TO BE RESURFACED TO THE ENDS OF THE RADII, OR AS DIRECTED BY THE ENGINEER

\*EDGES, PAVEMENT WIDENING, INTERSECTIONS, AND BRIDGE FLARES ARE INCLUDED IN THE TABLE OF QUANTITIES

\*SHOULDERS TO BE RECONSTRUCTED BY OTHERS



**TYPICAL SECTION NO. 1**

USE WITH MAP 2, 6, 8, 10

NTS

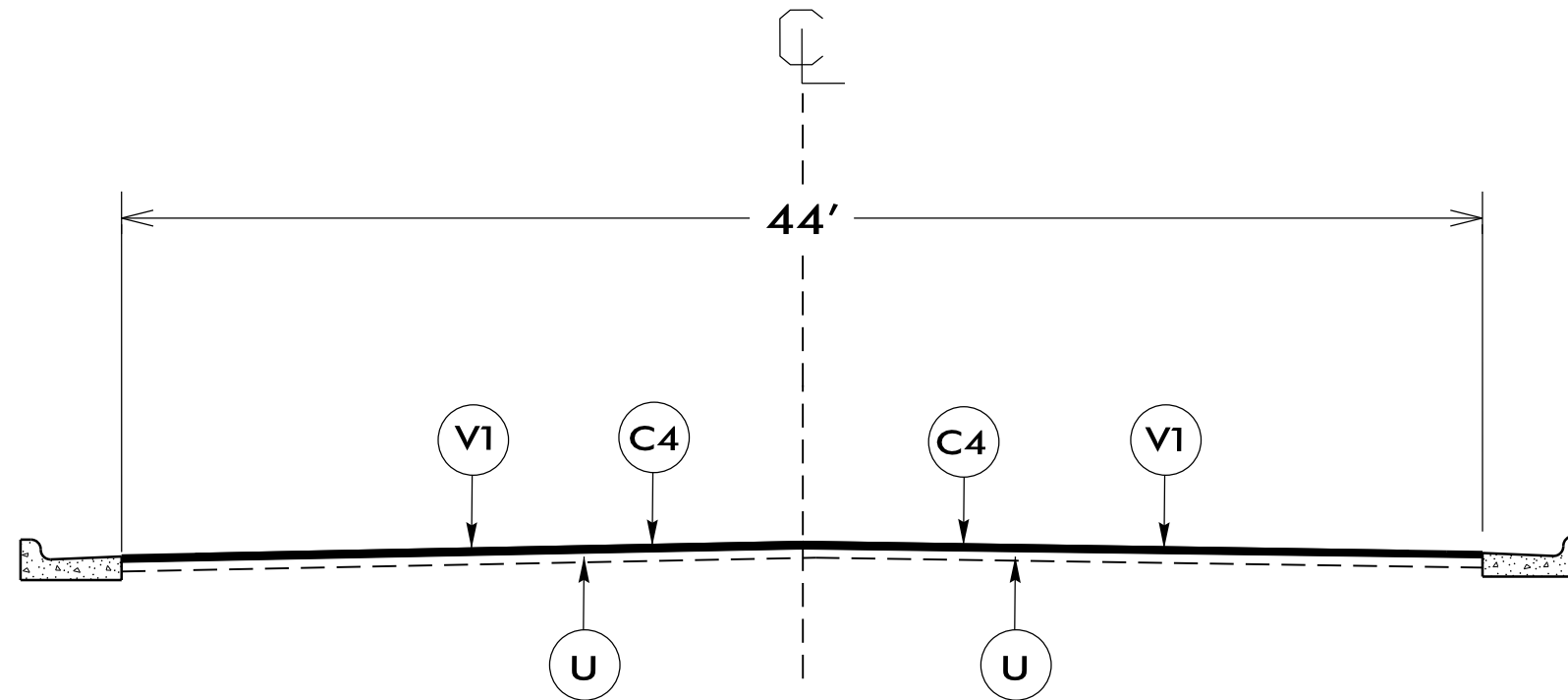
P A V E M E N T S C H E D U L E

C4	PROP. APPROX. 1½" ASPHALT CONCRETE SURFACE COURSE, TYPE S9.5B, AT AN AVERAGE RATE OF 168 LBS. PER SQ. YD.
U	EXISTING PAVEMENT.
V1	MILLING BITUMINOUS PAVEMENT. 1½" DEPTH.

PROJECT REFERENCE NO.	SHEET NO.
1CR.10701.5, ETC.	6

NOTES:

- \*ALL PAVED S.R. ROADS TO BE RESURFACED TO THE ENDS OF THE RADII, OR AS DIRECTED BY THE ENGINEER
- \*EDGES, PAVEMENT WIDENING, INTERSECTIONS, AND BRIDGE FLARES ARE INCLUDED IN THE TABLE OF QUANTITIES
- \*SHOULDERS TO BE RECONSTRUCTED BY OTHERS



**TYPICAL SECTION NO. 2**

USE WITH MAP 1

NTS

PAVEMENT SCHEDULE

C1	PROP. APPROX. 1" ASPHALT CONCRETE SURFACE COURSE, TYPE SF9.5A, AT AN AVERAGE RATE OF 110 LBS. PER SQ. YD.
U	EXISTING PAVEMENT.

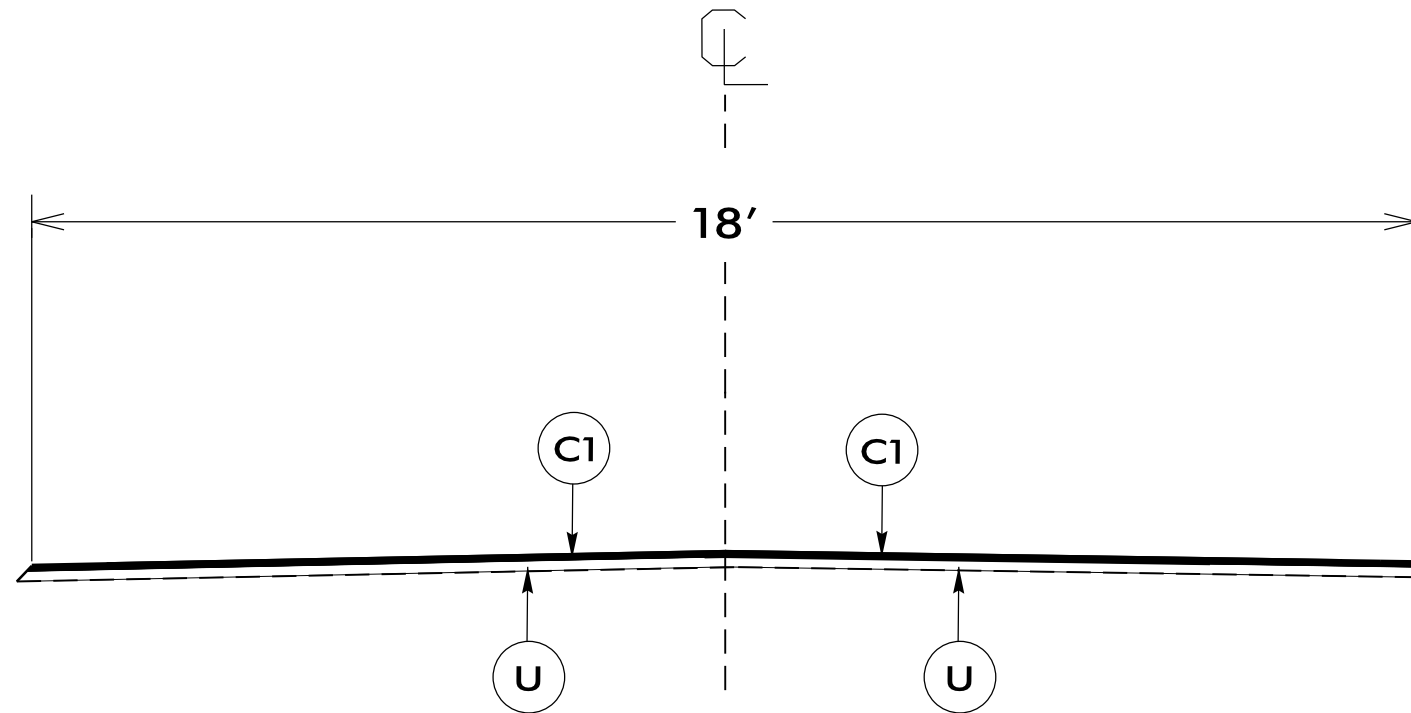
PROJECT REFERENCE NO.	SHEET NO.
1CR.10701.5, ETC.	7

NOTES:

\*ALL PAVED S.R. ROADS TO BE RESURFACED TO THE ENDS OF THE RADII, OR AS DIRECTED BY THE ENGINEER

\*EDGES, PAVEMENT WIDENING, INTERSECTIONS, AND BRIDGE FLARES ARE INCLUDED IN THE TABLE OF QUANTITIES

\*SHOULDERS TO BE RECONSTRUCTED BY OTHERS



**TYPICAL SECTION NO. 3**

USE WITH MAP 3-5

NTS

PAVEMENT SCHEDULE

C3	PROP. APPROX. 1¼" ASPHALT CONCRETE SURFACE COURSE, TYPE S9.5B, AT AN AVERAGE RATE OF 140 LBS. PER SQ. YD.
U	EXISTING PAVEMENT.

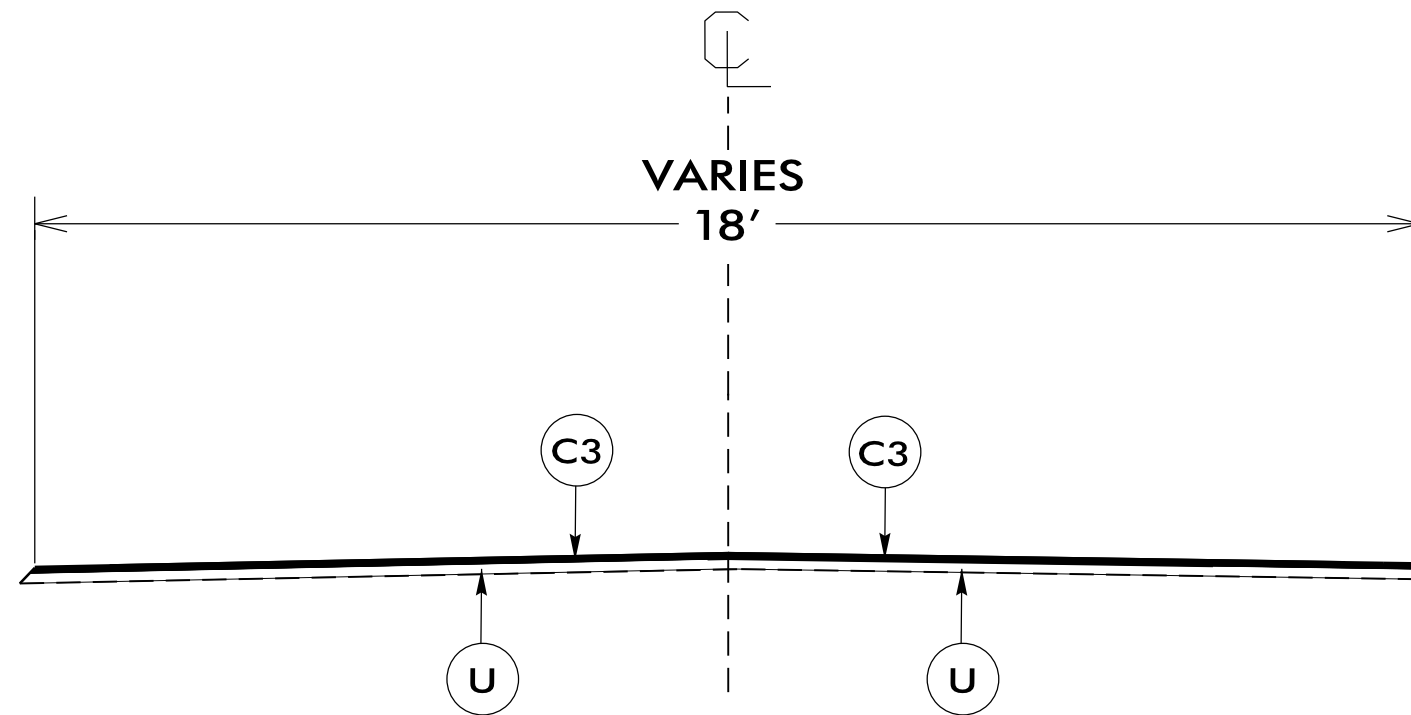
PROJECT REFERENCE NO.	SHEET NO.
1CR.10701.5, ETC.	8

NOTES:

\*ALL PAVED S.R. ROADS TO BE RESURFACED TO THE ENDS OF THE RADII, OR AS DIRECTED BY THE ENGINEER

\*EDGES, PAVEMENT WIDENING, INTERSECTIONS, AND BRIDGE FLARES ARE INCLUDED IN THE TABLE OF QUANTITIES

\*SHOULDERS TO BE RECONSTRUCTED BY OTHERS



**TYPICAL SECTION NO. 4**

USE WITH MAP 11

NTS



P A V E M E N T S C H E D U L E

PROJECT REFERENCE NO.	SHEET NO.
1CR.10701.5, ETC.	9

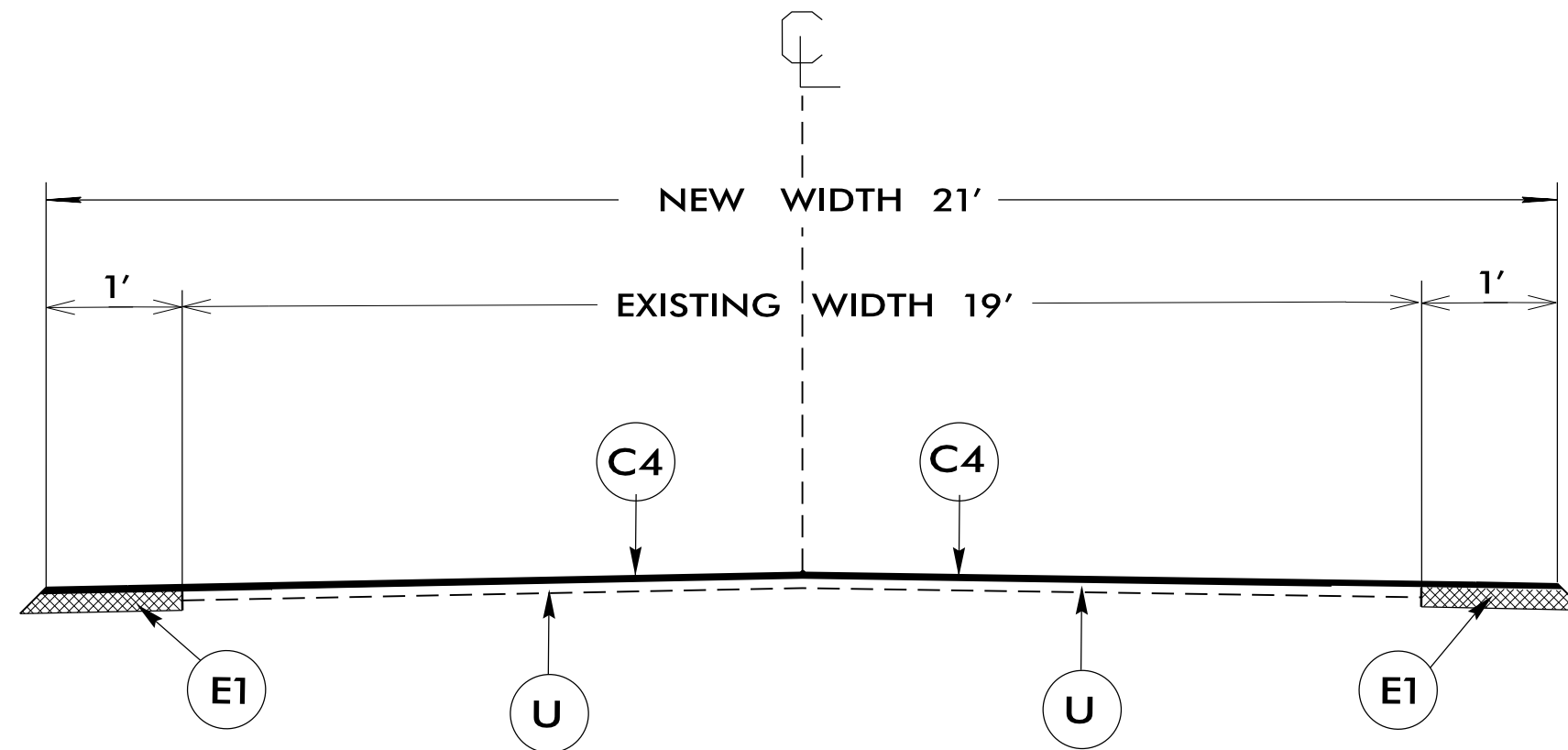
C4	PROP. APPROX. 1½" ASPHALT CONCRETE SURFACE COURSE, TYPE S9.5B, AT AN AVERAGE RATE OF 168 LBS. PER SQ. YD.
U	EXISTING PAVEMENT.
E1	PROP. APPROX. 5½" ASPHALT CONCRETE BASE COURSE, TYPE B25.0B, AT AN AVERAGE RATE OF 627 LBS. PER SQ. YD.

NOTES:

\*ALL PAVED S.R. ROADS TO BE RESURFACED TO THE ENDS OF THE RADII, OR AS DIRECTED BY THE ENGINEER

\*EDGES, PAVEMENT WIDENING, INTERSECTIONS, AND BRIDGE FLARES ARE INCLUDED IN THE TABLE OF QUANTITIES

\*SHOULDERS TO BE RECONSTRUCTED BY OTHERS



**TYPICAL SECTION NO. 5**

USE WITH MAP 9

NTS

PAVEMENT SCHEDULE

C4	PROP. APPROX. 1½" ASPHALT CONCRETE SURFACE COURSE, TYPE S9.5B, AT AN AVERAGE RATE OF 168 LBS. PER SQ. YD.
U	EXISTING PAVEMENT.

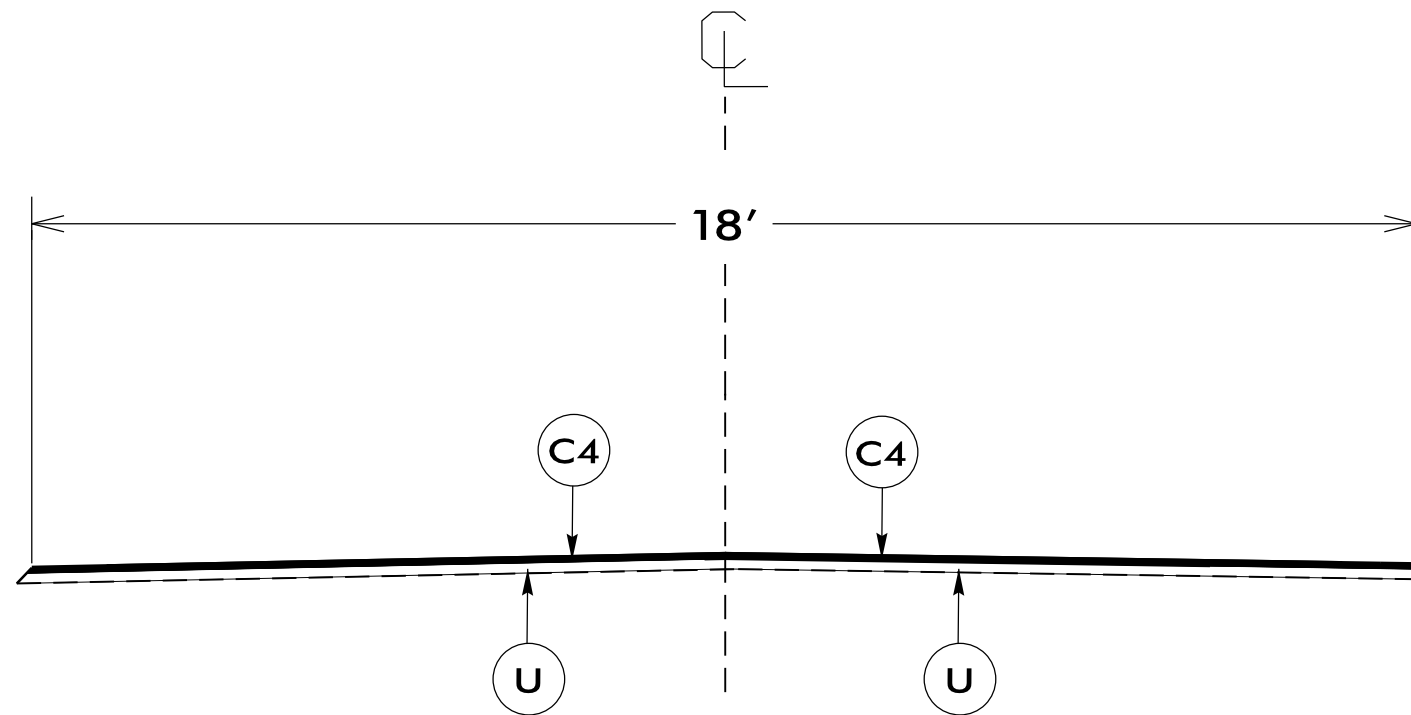
PROJECT REFERENCE NO.	SHEET NO.
1CR.10701.5, ETC.	10

NOTES:

\*ALL PAVED S.R. ROADS TO BE RESURFACED TO THE ENDS OF THE RADII, OR AS DIRECTED BY THE ENGINEER

\*EDGES, PAVEMENT WIDENING, INTERSECTIONS, AND BRIDGE FLARES ARE INCLUDED IN THE TABLE OF QUANTITIES

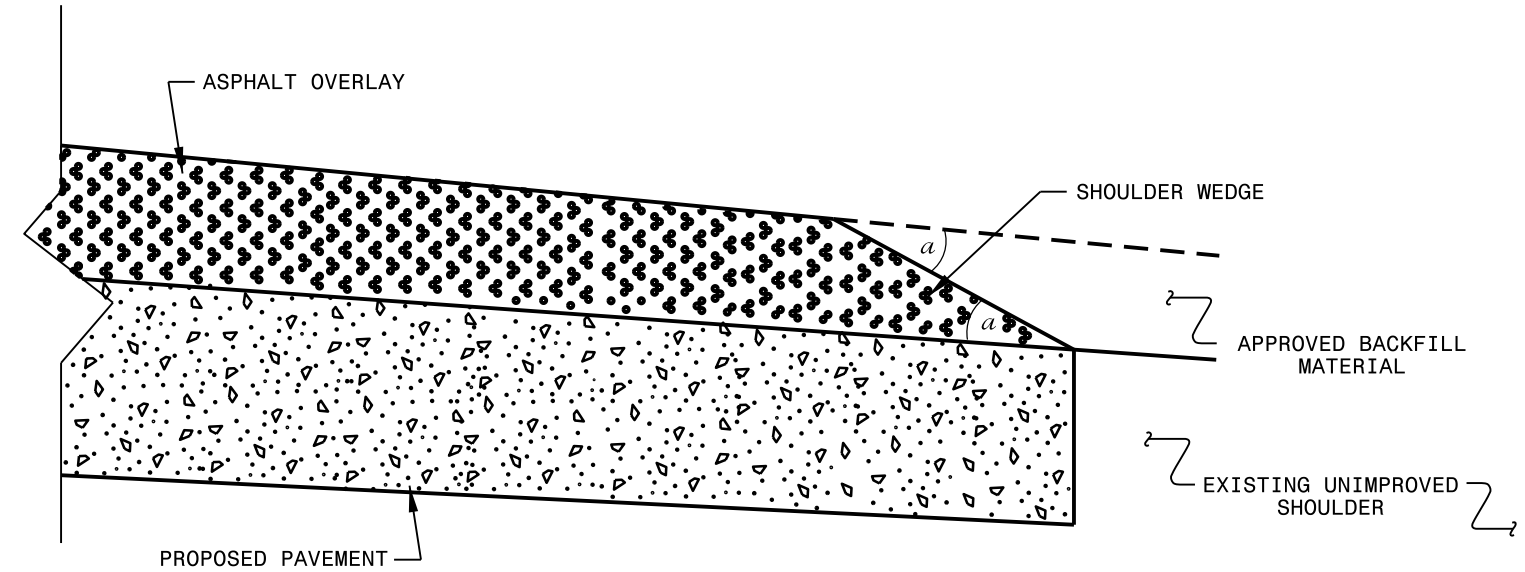
\*SHOULDERS TO BE RECONSTRUCTED BY OTHERS



**TYPICAL SECTION NO. 6**

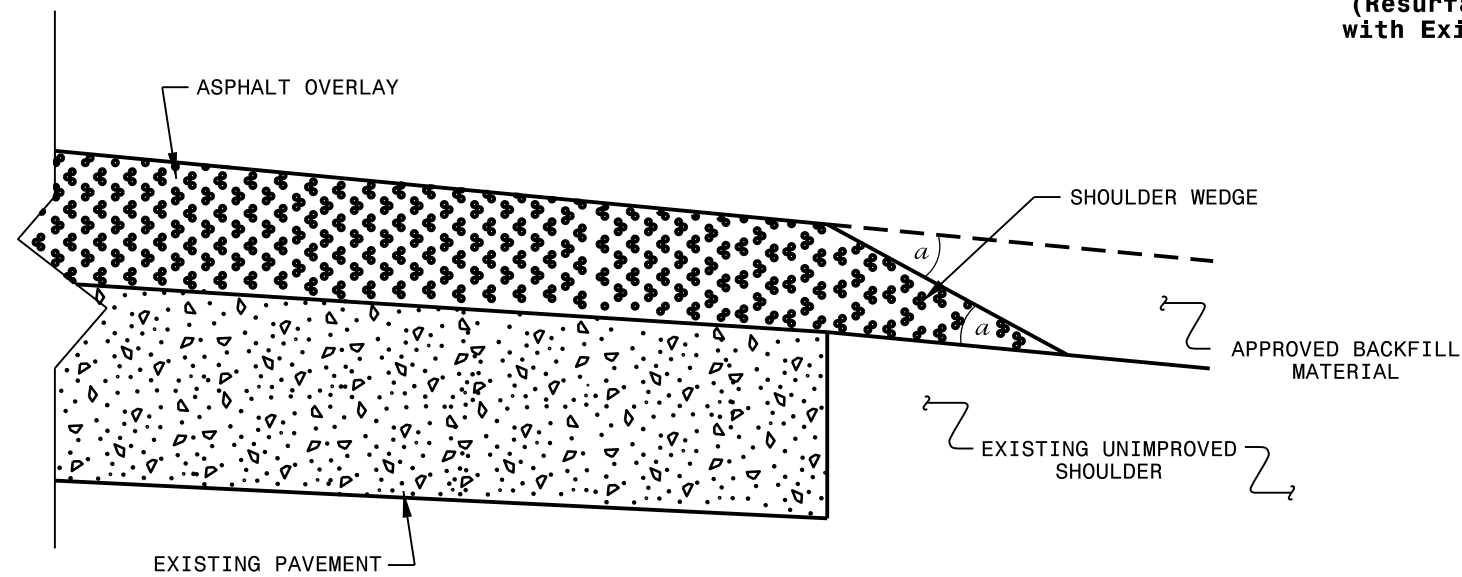
USE WITH MAP 7

NTS



### SHOULDER WEDGE DETAIL

(Resurfacing Projects w/ Widening or  
with Existing Paved Shoulder > 2 ft.)



### SHOULDER WEDGE DETAIL

(Resurfacing Projects w/ NO Widening)

**NOTES:**

- 1) DETAIL DOES NOT APPLY TO OGAFB AND ULTRA-THIN BONDED WEARING COURSE.
- 2) BACKFILL SHOULDER WITH APPROVED MATERIAL.
- 3) THE SHOULDER WEDGE DEVICE MAY BE DISENGAGED AT PAVED DRIVEWAYS AND SIDE STREETS.

*a* - SHOULDER WEDGE ANGLE = 30°

<b>CONTRACT STANDARDS AND DEVELOPMENT UNIT</b>	
Office 919-707-6950 FAX 919-250-4119	
<b>SHOULDER WEDGE DETAILS</b>	
ORIGINAL BY: T.SPELL	DATE: 7-19-11
MODIFIED BY:	DATE: 10/16/12
CHECKED BY:	DATE:
FILE SPEC.: s:\usr\details\stand\shoulderwedgedetail.dgn	

PROJECT NO.	SHEET NO.	TOTAL NO.
1CR.10701.5, ETC.	12	12

### SUMMARY OF QUANTITIES

PROJECT NO	COUNTY	MAP NO	ROUTE	DESCRIPTION	TYP NO	LANES	LANE TYPE	FINAL SURFACE TESTING REQUIRED	WARM MIX ASPHALT REQUIRED	LENGTH MI	WIDTH FT	MOBILIZATION LS	INCIDENTAL STONE BASE TONS	1½" MILLING SY	INCIDENTAL MILLING	BASE COURSE, B25.0B TONS	SURFACE COURSE, S9.5B TONS	SURFACE COURSE, SF9.5A TONS	ASPHALT BINDER FOR PLANT MIX TONS	AC PLANT MIX (REPAIR) TONS	MASONRY DRAINAGE STRUCTURE REPAIR EA	2'-6" CURB & GUTTER LF	CONCRETE CURB RAMPS EA	ADJ. OF MANHOLES EA	ADJ. OF METER OR VALVE BOX EA	TEMPORARY TRAFFIC CONTROL LS
1CR.10701.5	Pasquotank	1	US 158 BUSINESS	FROM HARNEY ST TO US 17 BUSINESS	2	4	MU	NO	NO	0.43	44	1		11,100			1,139		68	20	11	50	8	10	4	1
1CR.20151.47	Camden	2	SR 1110 WICKHAM RD	FROM NC 343 TO SR 1111	1	2	2WU	NO	NO	2.18	20	*	50					2,336	156							*
1CR.20151.48	Camden	3	SR 1158 GLEN DR	FROM SR 1125 TO SR 1124	3	2	2WU	NO	NO	0.27	18	*	5					158	11							*
1CR.20151.49	Camden	4	SR 1157 DUKE ST	FROM SR 1124 TO SR 1158	3	2	2WU	NO	NO	0.16	18	*	5					93	6							*
1CR.20151.50	Camden	5	SR 1159 EARL LANE	FROM SR 1124 TP SR 1158	3	2	2WU	NO	NO	0.14	18	*	5					82	5							*
1CR.20701.100	Pasquotank	6	SR 1304 OWNLEY ROAD	FROM SR 1303 TO SR 1303	1	2	2WU	NO	NO	0.93	18	*	25					816	55							*
1CR.20701.101	Pasquotank	7	SR 1140 NIXONTON RD	FROM SR 1136 TO SR 1100	6	2	2WU	NO	NO	1.3	18	*	35		360		1,277		77							*
1CR.20701.102	Pasquotank	8	SR 1200 ALBEMARLE DR	FROM SR 1118 TO SR 1226	1	2	2WU	NO	NO	0.79	20	*	5					809	54							*
1CR.20701.103	Pasquotank	9	SR 1140 HALLS CREEK	FROM SR 1197 TO SR 1136	5	2	2WU	NO	NO	3.27	19	*	80	900		1,478	3,555		278							*
1CR.20701.104	Pasquotank	10	SR 1365 TEMPLE ROAD	FROM SR 1366 TO SR 1356	1	2	2WU	NO	NO	0.47	18	*	5					432	32							*
1CR.20701.105	Pasquotank	11	SR 1100 NIXONTON ROAD	SR 1140 HALLS CREEK TO SYMONDS CREEK BRIDGE	4	2	2WU	NO	NO	2.62	18	*	40				2,098		126							*
<b>GRAND TOTAL</b>										<b>12.56</b>		<b>1</b>	<b>255</b>	<b>12,000</b>	<b>360</b>	<b>1,478</b>	<b>8,069</b>	<b>4,726</b>	<b>868</b>	<b>20</b>	<b>11</b>	<b>50</b>	<b>8</b>	<b>10</b>	<b>4</b>	<b>1</b>